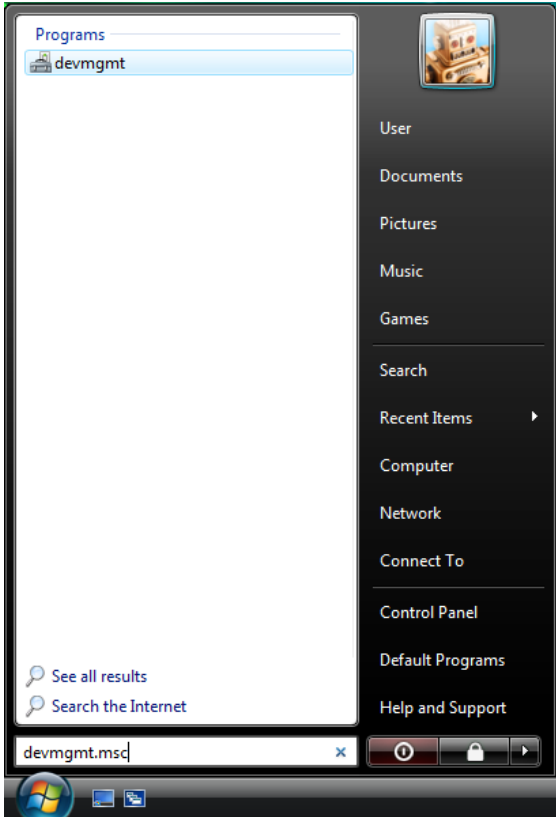
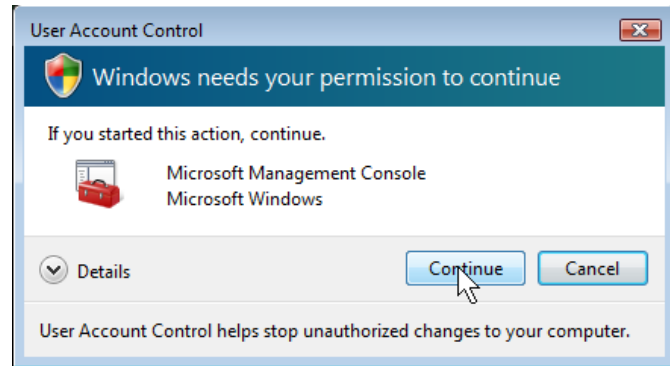


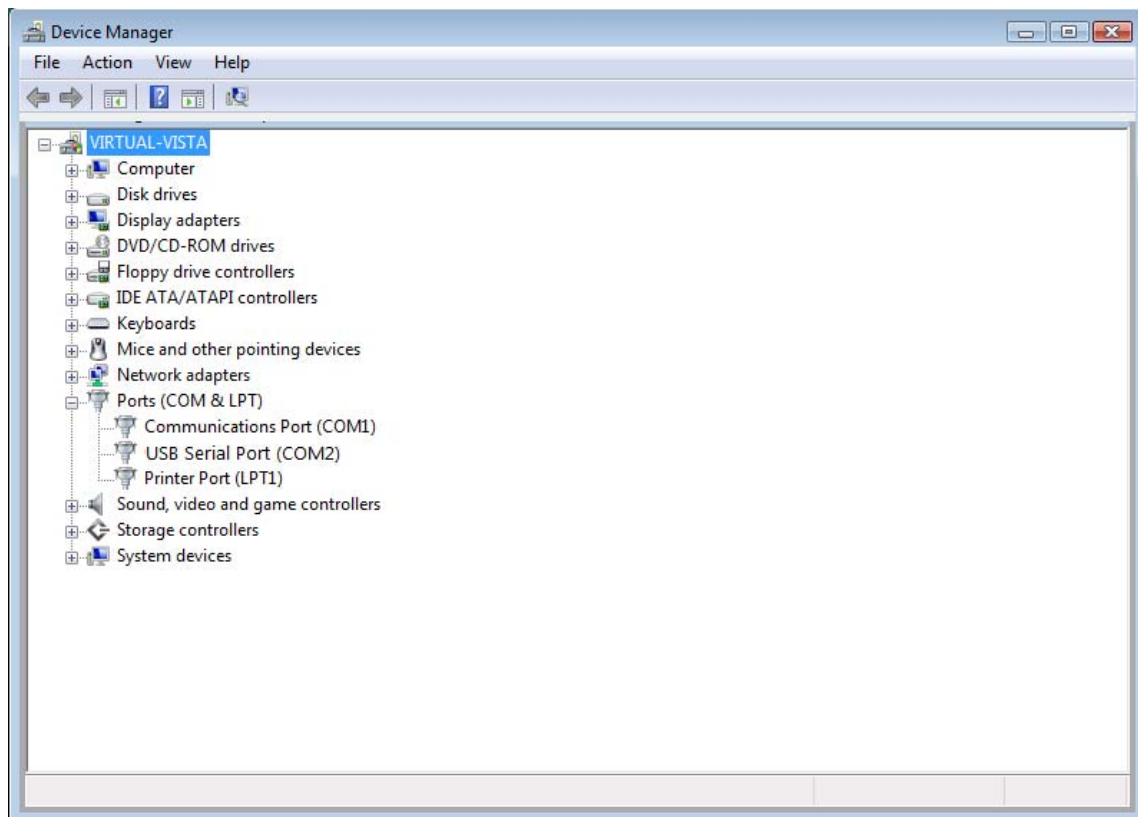
How to find your COM Port Windows Vista/7



1. Click on the Start button in the bottom left corner of your screen
2. Then type "devmgmt.msc", and hit Enter
3. If Windows asks for your permission to continue, click on Continue



4. When the device manager shows up, Find the entry that says "Ports (COM & LPT)" and click on the + beside it to expand it.



- If you are using a serial port built into the computer, it will be listed as a "Communications Port".
- If you are using a USB to Serial Adapter, it will be listed as a "USB Serial Port".
- The COM port number is shown in parentheses beside the name.